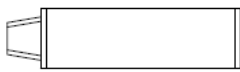
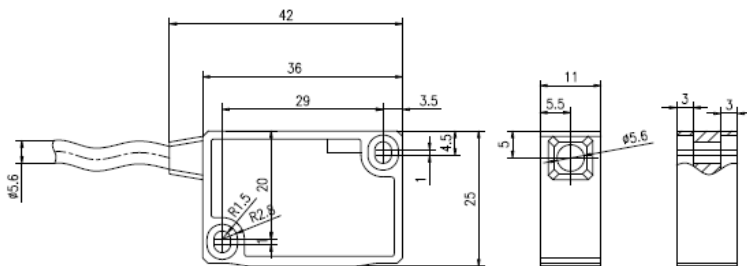


- Incremental output signal
- High reliability non-contact sensing technology
- Industry standard digital and analogue output options
- Customer selectable resolutions from 2.5um to 100um
- Stick-on reference mark options
- Axis lengths of up to 50 m
- Excellent dirt immunity
- High speed operation
- Integral set-up LED



Dimension (Unit: mm)



Output definition:

Color	Red	Black	Green	Brown	Blue	Yellow	White	Grey	Silver
Signal	24V	GND	A+	A-	B+	B-	Z+	Z-	Shell

Travel Speed:

Resolution (mm)	Travel speed Vmax. (m/s)									
0.001	0.04	0.05	0.06	0.06	0.13	0.25	0.49	0.93	1.25	2.27
0.005	0.22	0.25	0.28	0.31	0.63	1.25	2.45	4.67	6.25	11.36
0.01	0.44	0.50	0.55	0.63	1.25	2.50	4.90	9.35	12.50	22.73
0.025	1.10	1.25	1.39	1.56	3.13	6.25	12.25	23.36	31.25	56.82
0.05	2.20	2.50	2.77	3.13	6.25	12.50	24.51	46.73	62.50	113.64
0.1	4.39	5.00	5.54	6.25	12.50	25.00	49.02	93.46	125.00	227.27
Pulse interval (μs)	22.76	20.00	18.04	16.00	8.00	4.00	2.04	1.07	0.80	0.44
Counting Frequency (Hz)	10,984	12,500	13,858	15,625	31,250	62,500	122,549	233,645	312,500	568,182

System data:

Feature	Technical Data	Additional information
Scale embodiment	MT50	
Resolution	Max.0.1um	
System accuracy	± (0.002+0.03×L) mm	L in m
Repeat accuracy	±0.002mm	
Sensor/band reading distance	0.8±0.3mm	
Travel speed	≤5m/s	
Housing	Alloy	
Operating temperature	-10~+70°C	
Storage temperature	-30~+80°C	
Protection category	IP67	
Operating voltage	24VDC±20%	
Current consumption	Max.35mA	
Type of connection	Round connector	Cable length Max.10m
Output Signals	Increments A,B	Digital Signal
Output Circuit	LD	Line driver

Order table:

Feature	Order data	Specifications	Additional information
Resolution	5	0.0005mm	
	10	0.001mm	
	20	0.002mm	
	50	0.005mm	
	100	A 0.01mm	
	200	0.02mm	
	250	0.025mm	
Cable length	500	0.05mm	
	1000	0.1mm	
	1	1m	Standard
Connections	4	B 4m	Max. 10m
		C	= Open cable ends D2= Connection by 9 pin D-SUB

Order code:

MRB50 - -
A B C